



INSTALLATION GUIDELINES

RASCOtec Collar

GENERAL NOTES

RASCOtec injection collars shall be fitted tightly to the base with ends butted to provide a continuous barrier. As later drilling into the collar always involves the risk of damage to the penetrating element, the collar shall, wherever possible, be provided with connector hoses. The number of connector hoses required depends on the size and geometry of the penetrations. However, a minimum of two connector hoses shall be installed (to allow venting).

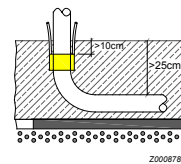
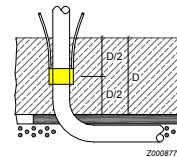
PERSONAL PROTECTIVE EQUIPMENT

- wear suitable protective gloves and goggles



POSITIONING

- for element thicknesses up to 40 cm: along centreline of element
- for element thicknesses exceeding 40 cm: 10 cm from grouting side



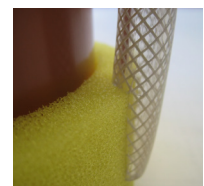
FIXING

- cut injection collar to size
- fix using adhesive tape and/or cable ties



FIXING OF CONNECTOR HOSE

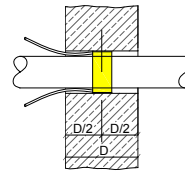
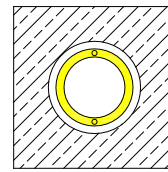
- cut out part of connector hose section at end
- fit tightly to collar and secure
- fix and seal hose



DRILLED PENETRATION

The drilled hole shall be at least 40 mm larger than the external pipe diameter.

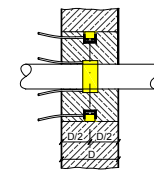
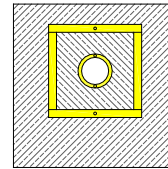
- install collar
- pack with mortar on either side
- grout without pressure



BOXED-OUT PENETRATION

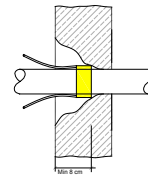
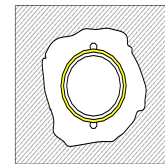
The box-out size determines the choice of system (injection channel or injection collar) used to waterproof the concrete/concrete joint.

- install concrete/concrete joint seal
- install injection collar
- cast waterproof concrete/mortar infill to box-out
- grout concrete/concrete joint
- grout injection collar without pressure



REMEDIAL WATERPROOFING OF LEAKING PENETRATION

- cut away material around penetration to approx. 12 cm depth
- install injection collar with connector hoses
- place waterproof mortar around penetration
- grout injection collar without pressure



LEGAL NOTICE: The information provided on the use and application of our products in this technical data sheet is based on the present state of our knowledge. The customer shall bear sole responsibility for the proper specification, application and use of the products in line with the intended purpose, project-specific conditions and external actions. The most recent technical data sheet shall apply. The current technical data sheets are available at www.rascor.com. Our General Terms of Business shall form an integral part of this technical data sheet.

Rascor International Ltd.
Gewerbestrasse 4
CH-8162 Steinmaur / Switzerland
Phone: +41 (0)44 857 11 11
Fax: +41 (0)44 857 11 00
www.rascor.com